

Beloved by Friends Mitts by Lilith Dow

Converted the written pattern of Scroll Pattern by Barbara G. Walker in her book: A Treasury of Knitting Patterns (pg. 220). it has not been test knitted by other people. I am a tight knitter and I like my mitts snug. I've always admired the stitch and thought it would be wonderful as a set of mitts.



Source Materials (2):

Stitch from: A Treasury of Knitting Patterns by Barbara G. Walker - Scroll Pattern (pg. 220)

Stitch from: Vogue Knitting Stitchionary Vol. 1 Knit & Purl - #196 Eyelet Swirl stitch (pg. 134)

Inspiration from: Fallberry Mitts by Anne Hanson via knitty.com

<http://www.ravelry.com/patterns/library/fallberry-mitts>

Construction Guide from:

Ann Budd's "The Knitter's Handy Book of Patterns" pg. 8 - 13, mitten section

Used JSSBO:

<http://www.knitty.com/ISSUEfall09/FEATjssbo.php>

Needles: 3 mm (US 2) I used Addi Turbo Lace 32" circulars.

Yarn: sports weight
Mirasol Nuna
175 m (191 yds)/50 g
40% merino wool/40% silk/20% bamboo
1 skein

Gauge: 8 sts x 9 rows = 1 inch (worked in scroll pattern & measured after blocking, unstretched)

Size: child[small woman] **Note:** fit is on the snug side

CO: 42[52] stitches

CO 42[52] stitches on larger needles using any CO of your choosing (I use long tail CO).

(This will enable stitches to not be tight. I used US 6 needles.)

Join for working in round.

Switch to 3 mm (US 2) needles.

Cuff:

do Scroll Pattern Mitts Charts 2x

Thumb Gusset:

Continue doing chart as established:

Rnd 1:	At beginning of next round, M1L, pm, then continue chart as established until end of round	43 [53] stitches on needle
Rnd 2:	k1, sm, do chart as established	
Rnd 3:	M1L, k1, M1R, sm, do chart as established	45 [55] sts, 3 gusset sts
Rnd 4 - 6:	k3, sm, do chart as established	
Rnd 7:	M1L, k3, M1R, sm, do chart as established	47 [57] sts, 5 gusset sts
Rnd 8 - 10:	k5, sm, do chart as established	
Rnd 11:	M1L, k5, M1R, sm, do chart as established	49 [59] sts, 7 gusset sts
Rnd 12 - 14:	k7, sm, do chart as established	
Rnd 15:	M1L, k7, M1R, sm, do chart as established	51 [61] sts, 9 gusset sts
Rnd 16 - 18:	k9, sm, do chart as established	
Rnd 1:	M1L, k9, M1R, sm, do chart as established	53 [63] sts, 11 gusset sts
Rnd 2 - 4:	k11, sm, do chart as established	
Rnd 5:	M1L, k11, M1R, sm, do chart as established	55 [65] sts, 13 gusset sts
Rnd 6 - 8:	k13, sm, do chart as established	
Rnd 9:	M1L, k13, M1R, sm, do chart as established	57 [67] sts, 15 gusset sts
Rnd 10 - 12:	k15, sm, do chart as established	
Rnd 13:	M1L, k15, M1R, sm, do chart as established	59 [69] sts, 17 gusset sts
Rnd 14 - 16:	k17, sm, do chart as established	
Rnd 17:	M1L, k17, M1R, sm, do chart as established	61 [71] sts, 19 gusset sts
Rnd 18:	k19, sm, do chart as established, stop before last st. before end of round, place this last stitch and the next 20 sts of next round onto waste yarn. There should 21 sts on waste yarn (19 gusset sts + 1 st on either side of gusset sts, remove marker when transferring to waste yarn)	

Upper Hand:

Set-up: CO 4 sts on right hand needle using Backward Loop CO.

Rnd 1: omit first selvage stitch of chart, this has been transferred to waste yarn, continue chart as established until last 6 sts of round (this would be last 2 sts on repeat section of Rnd 1 of chart and the 4 cast on stitches from prior round), for Right Mitt: do k3tog, k1, pm, for Left Mitt: do k2tog, yo, k1, pm (this marker denotes beginning of next round),

Rnd 2: Beginning of next Rnd (Rnd 2): for Right Mitt: do k2tog (this is your new selvage st at beginning of rnd 2), for Left Mitt do: k1 (this is your new selvage st at beginning of rnd 2), slip next 2 sts as if doing "k2tog" (slip the sts only), k1, pass the 2 slipped sts over the "k1" st (this is the "ssk" st at beginning of Rnd 2 referenced chart).

Rnd 2 - 17: continue chart as established for 1.5", about 16 rounds.

Rnd 18: BO using JSSSBO. Note when get to k2tog or ssk on chart, work the stitch as indicated. If get to YO on chart, disregard and work as a knit stitch.

Thumb: 21 sts on waste yarn.

Rnd 1: place 10 stitches on one needle and the remaining 11 sts on the other needle, make sure the 1st and last stitch is on the same needle so the gap is between them.

k1, pick up 2 stitches at gap, k20 (23 sts on needle)

Rnd 2: (K6, k2tog) 2x, k7 - 21 sts remain

Rnd 3 - 4: knit

Rnd 5: (k5, k2tog) 3x - 18 sts remain

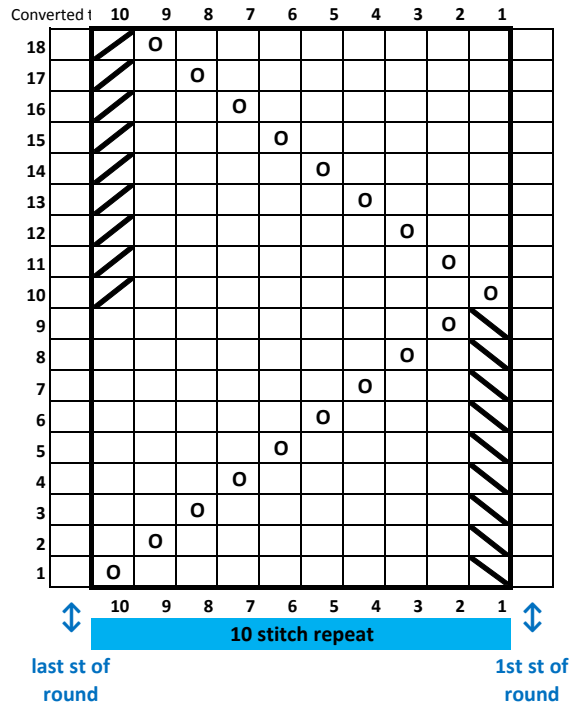
Rnd 6: knit

Rnd 7: (k4, k2tog) 3x - 15 sts remain

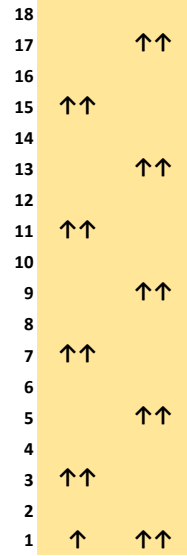
Rnd 8: knit

Rnd 9: BO using JSSSBO.

Left Mitt



while on 3rd chart repeat only while on 4th chart repeat only



Key

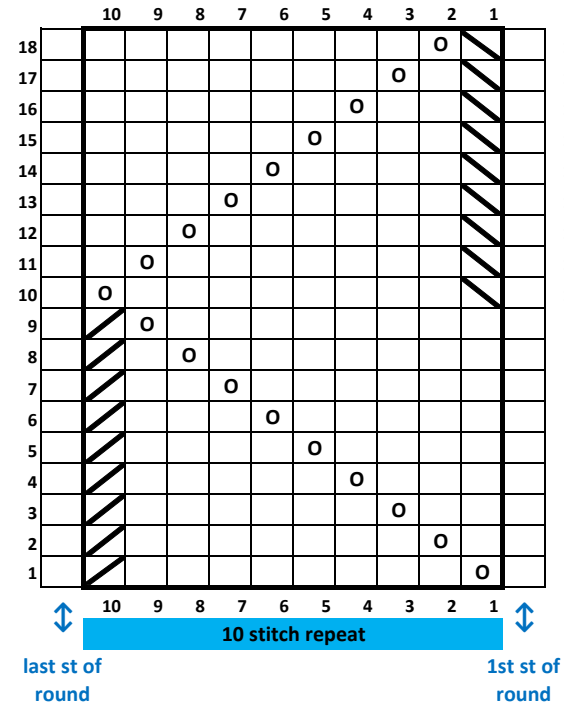
Knit
 K2tog
 SSK
 yo

↑ Increase 1 st of Thumb Gusset Section

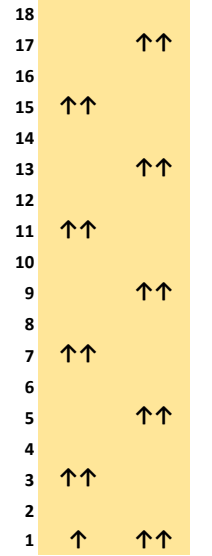
↑↑ Increase 2 sts of Thumb Gusset Section

All rounds of chart are read from right to left

Right Mitt



while on 3rd chart repeat only while on 4th chart repeat only



Note: Converted the written pattern of Scroll Pattern by Barbara G. Walker in her book: A Treasury of Knitting Patterns (pg. 220).

Scroll Pattern by Barbara G. Walker

Note: Converted the written pattern of Scroll Pattern by Barbara G. Walker in her book: *A Treasury of Knitting Patterns* (pg. 220).

Chart Worked in the Round

Key





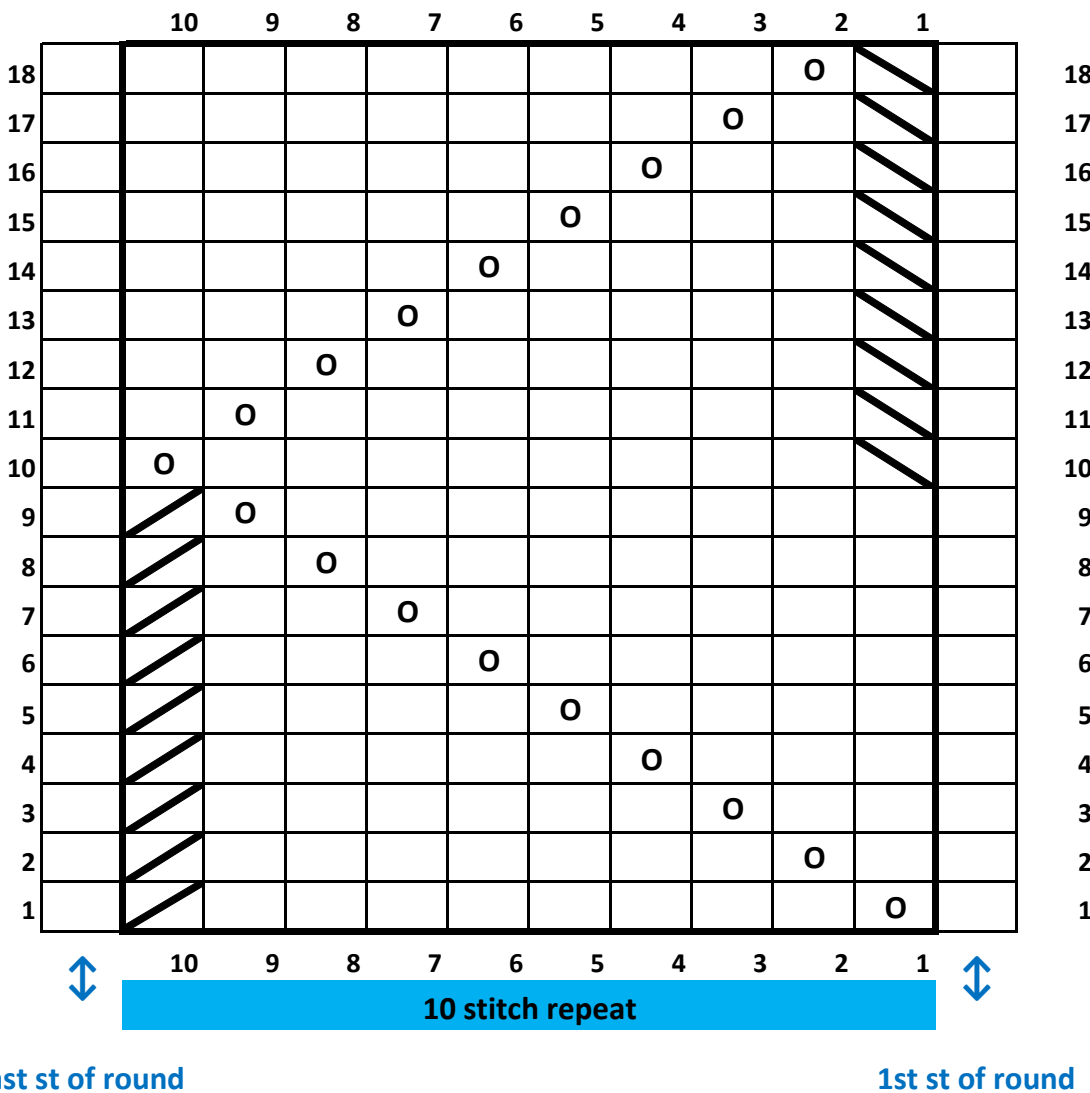
-  Knit
-  K2tog
-  SSK
-  YO

Chart is read from right to left only
if worked in the round



Scroll Pattern by Barbara G. Walker

Note: Converted the written pattern of Scroll Pattern by Barbara G. Walker in her book: *A Treasury of Knitting Patterns* (pg. 220).

Key




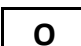
	RS - Knit, WS - Purl
	RS - K2tog, WS - P2tog
	RS - SSK, WS - P2tog tbl
	RS & WS - YO

Chart is read from right to left on RS rows and left to right on WS rows if worked flat

Chart Worked Flat

