



## *Dappled Silhouette*

*Design by Sara Sybesma*

---

### **Skill Level:**

Intermediate

### **Finished Sizes:**

Bust: 37½ (41½, 45½, 49½, 53½)" [95.5 (105.5, 115.5, 125.5, 136) cm]

Front Length: 26½ (27, 27½, 28, 28½)" [67.5 (68.5, 70, 71, 72.5) cm],  
from shoulder along center of front

Back Length: 29 (29½, 30, 30½, 31)" [73.5 (75, 76, 77.5, 78.5) cm],

from shoulder along center of back

### **Yarns:**

Dale Garn Alpakka (100% alpaca; 145 yds [133 m]/50 g), color #0083 Charcoal Heather (A) – 7 (9, 10, 11, 12) balls

Dale Garn Falk (100% superwash wool; 116 yds [106 m]/50 g), colors #0083 Charcoal Heather (B) – 2 balls, and #0007 Gray Heather (C) – 2 balls  
(both yarns available at [woolybaabaa.com](http://woolybaabaa.com))

### **Needles:**

Size U.S. 8 (5 mm) straight needles.

Size U.S. 4 (3.5 mm) straight needles.

Adjust needle sizes if necessary to obtain correct gauge.

### **Notions:**

Cable needle, waste yarn, tapestry needle.

### **Gauges:**

26 sts and 34 rows = 4" (10 cm) in stockinette stitch with Alpakka and size U.S. 4 (3.5 mm)

needles; 18 sts and 23 rows = 4" (10 cm) in stockinette stitch with Falk and size U.S. 8 (5 mm)

needles; and 20 sts and 24 rows = 4" (10 cm) over cable pattern with Falk and size U.S. 8 (5 mm) needles. Take time to check your gauges.

### **Notes:**

A larger size needle is used when working the hem joining row to prevent the row from looking "pinched". Make sure to change back to the smaller needle on the next row.

When binding off stitches for the shoulders and top edges of the cable panels, make sure to use a fairly loose bind-off method so the top edge will have enough stretch to fit easily over your head.

### **Stitch Guide:**

**Stockinette Stitch** (any number of sts)

Knit RS rows, and purl WS rows.

**Cable Panel** (multiple of 12 sts + 2)

**Row 1 (RS):** K1, \*k2, 2/2LC, 2/2RC, k2; rep from \* to last st, k1.

**Row 2 and all other WS rows:** Purl.

**Row 3:** Knit.

**Row 5:** K1, \*2/2RC, k4, 2/2LC; rep from \* to last st, k1.

**Row 7:** Knit.

**Row 8:** Purl.

Rep rows 1–8 for cable panel.

**2/2LC (2 over 2 left cross):** Slip 2 sts to cn and hold in front of work, k2, then k2 from cn.

**2/2RC (2 over 2 right cross):** Slip 2 sts to cn and hold in back of work, k2, then k2 from cn.

### **Special Techniques**

**Hem joining row:** This is a way to join a hem while working instead of sewing the hem when the knitting is complete. The joining row is more elastic than a sewn hem, so this method is ideal for all kinds of knitted items and is best worked when a provisional cast-on method has been used to begin the piece, and the row is worked with a larger size needle to preserve the stretch. Remove the provisional cast-on and place resulting stitches onto the same size needle as used for the main knitting, holding both needles parallel and with wrong sides together (you'll see the right side of the work on the front and back), and with a larger size needle \*insert needle into 1 stitch on both smaller needles and knit them together; repeat from \* until all stitches from both needles have been knit together.

**Short-rows:** Short-rows are used to shape pieces by working partial rows, wrapping the next stitch, then turning and working back to the edge or specified point in the work; this is indicated by the abbreviation "w&t".

To work a right side short-row, knit to the point where the piece will be turned, slip the next stitch to the right-hand needle, bring the yarn between the needles to the front of the work, return the slipped stitch to the left-hand needle and turn to work a wrong side row.

To work a wrong side short-row, purl to the point where the piece will be turned, slip the next stitch to the right-hand needle, bring the yarn between the needles to the back of the work, return the slipped stitch to the left-hand needle and turn to work a right side row.

To hide the wrap on the following row, on right side rows, insert the right needle under the wrap and into the stitch it wraps, then knit these two together. On wrong side rows, lift the wrap from the back (right side) of the work and place it onto the left needle, then purl together the wrap and the stitch it wraps.

### **FRONT CABLE PANEL**

Using larger needles and color C, CO 38 sts.

**Rows 1–3:** Knit.

**Row 4 (WS):** Purl.

**Next row (RS):** Working row 1 of chart, k1, \*k2, 2/2LC, 2/2RC, k2; rep from \* 2 more times, k1. Continue in established pattern until piece measures 17½ (18, 18, 18½, 18½)" [44.5 (45.5, 45.5, 47, 47) cm], ending with a row 3 or 7 of chart and dec 2 sts over cables on last row – 36 sts remain.

Change to color B. Work 9 (9, 9½, 9½, 10)" [23 (23, 24, 24, 25.5) cm] in St st, ending with a RS row. Piece should measure 26½ (27, 27½, 28, 28½)" [67.5 (68.5, 70, 71, 72.5) cm] from CO edge. BO all sts.

### **BACK CABLE PANEL**

Work same as Front Cable Panel until piece measures 12 (12, 12½, 12½, 13)" [30.5 (30.5, 32, 32, 33) cm], ending with a row 3 or 7 of chart.

Change to color B. Work 17 (17½, 17½, 18, 18)" [43 (44.5, 44.5, 45.5, 45.5) cm] in St st, ending with a RS row. Piece should measure 29 (29½, 30, 30½, 31)" [73.5 (75, 76, 77.5, 78.5) cm] from CO edge.

BO all sts.

### **RIGHT FRONT**

Using smaller needles and color A, CO 39 (46, 52, 59, 65) sts using a provisional method.

Beg with a RS row, work 8 rows in St st.

**Hem joining row (RS):** Remove provisional CO and place resulting 39 (46, 52, 59, 65) sts onto smaller needle, with larger needle join both sets of sts to form the hem (see Special Techniques) – 39 (46, 52, 59, 65) sts.

Change back to smaller needles.

#### **Shape hem**

**Note:** when working short-rows, remember to pick up the wrap from the previous turn and work it together with the stitch it wraps (see Special Techniques).

**Short-rows 1 and 2:** P6 (8, 9, 10, 11), w&t; k6 (8, 9, 10, 11).

**Short-rows 3 and 4:** P12 (16, 18, 20, 22), w&t; k12 (16, 18, 20, 22).

**Short-rows 5 and 6:** P19 (24, 27, 30, 33), w&t; k19 (24, 27, 30, 33).

**Short-rows 7 and 8:** P26 (32, 36, 40, 44), w&t; k26 (32, 36, 40, 44).

**Short-rows 9 and 10:** P33 (40, 45, 50, 55), w&t; k33 (40, 45, 50, 55).

Continue even in St st over all sts until piece measures 20¾" [52.5 cm] from fold along shorter side edge, ending with a RS row.

#### **Shape armhole**

BO at beg of WS rows 5 (6, 7, 8, 9) sts once, 3 (4, 4, 4, 4) sts once, then 2 sts 0 (0, 1, 2, 2) times(s) – 31 (36, 39, 43, 48) sts remain.

**Next row (RS):** Knit.

**Dec row (WS):** P1, p2tog, purl to end – 1 st decreased.

Rep last 2 rows 7 (9, 9, 10, 12) more times – 23 (26, 29, 32, 35) sts remain.

Continue even until armhole measures 5¾ (6¼, 6¼, 7¼, 7¾)" [14.5 (16, 17, 18.5, 19.5) cm]. BO all sts.

## LEFT FRONT

Using smaller needles and color A, CO 39 (46, 52, 59, 65) sts using a provisional method.

Beg with a RS row, work 8 rows in St st.

**Hem joining row (RS):** Remove provisional CO and place resulting 39 (46, 52, 59, 65) sts onto smaller needle, with larger needle join both sets of sts to form the hem – 39 (46, 52, 59, 65) sts. Change back to smaller needles. Work 1 row even in St st.

### Shape hem

**Short-rows 1 and 2:** K6 (8, 9, 10, 11), w&t; p6 (8, 9, 10, 11).

**Short-rows 3 and 4:** K12 (16, 18, 20, 22), w&t; p12 (16, 18, 20, 22).

**Short-rows 5 and 6:** K19 (24, 27, 30, 33), w&t; p19 (24, 27, 30, 33).

**Short-rows 7 and 8:** K26 (32, 36, 40, 44), w&t; p26 (32, 36, 40, 44).

**Short-rows 9 and 10:** K33 (40, 45, 50, 55), w&t; p33 (40, 45, 50, 55).

Continue even in St st over all sts until piece measures 20¾" [52.5 cm] from fold along shorter side edge, ending with a WS row.

### Shape armhole

BO at beg of RS rows 5 (6, 7, 8, 9) sts once, 3 (4, 4, 4, 4) sts once, then 2 sts 0 (0, 1, 2, 2) time(s) – 31 (36, 39, 43, 48) sts remain.

**Next row (WS):** Purl.

**Dec row (RS):** K1, ssk, knit to end – 1 st decreased.

Rep last 2 rows 7 (9, 9, 10, 12) more times – 23 (26, 29, 32, 35) sts remain.

Continue even until armhole measures 5¾ (6¼, 6¾, 7¼, 7¾)" [14.5 (16, 17, 18.5, 19.5) cm]. BO all sts.

## RIGHT BACK

Work same as Left Front until piece measures 22" [56 cm] from fold along shorter side edge, ending with a WS row.

### Shape armhole

BO at beg of RS rows 5 (6, 7, 8, 9) sts once, 3 (4, 4, 4, 4) sts once, then 2 sts 0 (0, 1, 2, 2) time(s) – 31 (36, 39, 43, 48) sts remain.

**Next row (WS):** Purl.

**Dec row (RS):** K1, ssk, knit to end – 1 st decreased.

Rep last 2 rows 7 (9, 9, 10, 12) more times – 23 (26, 29, 32, 35) sts remain.

Continue even until armhole measures 5¾ (6¼, 6¾, 7¼, 7¾)" [14.5 (16, 17, 18.5, 19.5) cm]. BO all sts.

## LEFT BACK

Work same as Right Front until piece measures 22" [56 cm] from fold along shorter side edge, ending with a RS row.

### Shape armhole

BO at beg of WS rows 5 (6, 7, 8, 9) sts once, 3 (4, 4, 4, 4) sts once, then 2 sts 0 (0, 1, 2, 2) time(s) – 31 (36, 39, 43, 48) sts remain.

**Next row (RS):** Knit.

**Dec row (WS):** P1, p2tog, purl to end – 1 st decreased.

Rep last 2 rows 7 (9, 9, 10, 12) more times – 23 (26, 29, 32, 35) sts remain.

Continue even until armhole measures 5¾ (6¼, 6¾, 7¼, 7¾)" [14.5 (16, 17, 18.5, 19.5) cm]. BO all sts.

## SLEEVES

Using smaller needles and color A, CO 54 (58, 61, 65, 68) sts using a provisional method.

Beg with a RS row, work 8 rows in St st.

**Hem joining row (RS):** Remove provisional CO and place resulting 54 (58, 61, 65, 68) sts onto smaller needle, with larger needle join both sets of sts to form the hem – 54 (58, 61, 65, 68) sts. Change back to smaller needles.

**Inc row (WS):** P1, p1f&b, purl to last 2 sts, p1f&b, p1 – 2 sts increased.

Continue in St st, rep Inc row every 8 rows 0 (0, 0, 3, 12) times, every 10 rows 0 (2, 12, 12, 5) times, then every 12 rows 11 (10, 2, 0, 0) times – 78 (84, 91, 97, 104) sts. Work even until piece measures about 18 (18, 18½, 18½, 18½)" [45.5 (45.5, 47, 47, 47) cm] from fold, ending with a WS row.

### Shape cap

BO 5 (6, 7, 8, 9) sts at beg of next 2 rows – 68 (72, 77, 81, 86) sts remain.

Work 2 rows even.

**Dec row (RS):** Ssk, knit to last 2 sts, k2tog – 2 sts decreased.

Rep Dec row every RS row 20 (22, 22, 24, 24) more times – 26 (26, 31, 31, 36) sts remain.

BO 0 (0, 2, 2, 3) sts at beg of next 0 (0, 2, 2, 2) rows – 26 (26, 27, 27, 30) sts remain.

Work 2 (2, 0, 0, 0) rows even. BO remaining sts.

## FINISHING

Weave in ends. Block pieces to finished measurements.

Using Mattress st, sew Right and Left Fronts to Front Cable Panel, and Right and Left Backs to Back Cable Panel. **Note:** because of the difference in gauges between the two yarns, you won't be able to sew into every stitch along the Right and Left Front and Back panels.

Beg at armholes, sew 11 (13, 15, 17, 19) sts of front and back tog for shoulder seams, leaving remaining sts open for neck. Neck opening should measure about 10¼ (10½, 10¾, 11, 11¼)" [26 (26.5, 27.5, 28, 28.5) cm] wide.

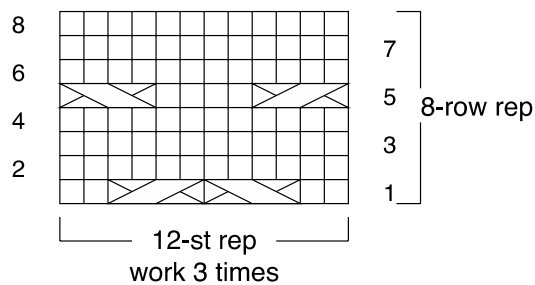
Sew in sleeves, easing upper edge of sleeve near shoulder seam to fit. Sew side and sleeve seams.

## ABBREVIATIONS

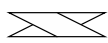
beg	=	begin(ning)
BO	=	bind off
cm	=	centimeter(s)
cn	=	cable needle
CO	=	cast on
dec	=	decrease
g	=	gram(s)
inc	=	increase

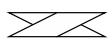
k = knit  
 k2tog = knit 2 stitches together (1 stitch decreased)  
 m = meter(s)  
 mm = millimeter(s)  
 p = purl  
 p1f&b = purl into front and back of same stitch (1 stitch increased)  
 p2tog = purl 2 stitches together (1 stitch decreased)  
 rep = repeat(s)(ing)  
 RS = right side  
 ssk = slip 2 sts knitwise, one at a time, then insert left needle into fronts of these 2 sts and knit them together through the back loops  
 st(s) = stitch(es)  
 St st = stockinette stitch  
 WS = wrong side  
 w&t = wrap and turn  
 yd(s) = yard(s)

### Cable Panel



□ k on RS, p on WS

 2/2LC (see Stitch Guide)

 2/2RC (see Stitch Guide)

